

## ASPHALT BATCHING PLANT



India's Leading **Make in India** manufacturer of superb quality asphalt batching plants established in Chennai.

INDIA'S CONSTRUCTION MACHINERY MANUFACTURER

## TECH SPECS

Plant Model	1000	1500	2000
Plant capacity at 3 % moisture content	80 t/h	120 t/h	160 t/h
Batch size	1000 kg	1600 kg	2000 kg
Cycle time	45 sec	45 sec	45 sec
<b>Units</b>			
Cold feed bins (No. of Bins )	4	4	4
Charging conveyor (Capacity)	140 t/h	140 t/h	180 t/h
Thermo drum (Dryer (LxD))	6.6 × 1.54 mtrs	8 × 2.1 mtrs	8 × 2.1 mtrs
Drive type	4W Friction drive		
Burner Type	High pressure, fully automatic, modulating		
Fuel	Diesel / furnace oil		
Capacity	7.6 MW/hr	14.1 MW/hr	14.1 MW/hr
Hot elevator capacity	140 t/h	140 t/h	180 t/h
<b>Tower unit</b>			
Filler elevator capacity	21 t/h	21 t/h	21 t/h
Screening unit (Screening method)	Inclined linear vibration		
No.of deck	4	4	4
Screening capacity	140 t/h	140 t/h	180 t/h
Hot aggregate bin unit (No. of bins)	4	4	4
Weighing unit (Aggregate hopper capacity)	1600 kg	1600 kg	2000 kg
Filler hopper capacity	300 kg	300 kg	300 kg
Bitumen hopper capacity	225 kg	225 kg	225 kg
Mixer unit type	Twin-shaft hot oil jacketed		
Mixer capacity	1600 kg	1600 kg	2000 kg
Bitumen pump	800 lpm	800 lpm	800 lpm
<b>Pollution Control Unit</b>			
Primary type	Centrifugal double cyclone		
Secondary type	Bag house filter		
Bag house filter	Reverse airflow		
Filter area	330 m <sup>2</sup>	330 m <sup>2</sup>	330 m <sup>2</sup>
Control panel type	Fully computer ized with manual over-ride		
<b>Accessories</b>			
Filler silo (Capacity range)	3 / 7 / 11 / 18 / 28 m <sup>3</sup>		
Bitumen tanks (Capacity range)	15 / 25 / 30 / 50 m <sup>3</sup>		
Heating system	Direct heating / thermic oil heating		
Thermic oil heater (Hot oil heater capacity)	300000 / 500000 kcal/hr		
Hot mix storage silo (Capacity range)	12 – 200 m <sup>3</sup>		
Plant capacity rated at	3% moisture content in cold aggregates Aggregate density of 1.6 tons / m <sup>3</sup> Mean sea level Ambient temperature of 30 °C Hot mix temperature of 150 °C		

## MIXER

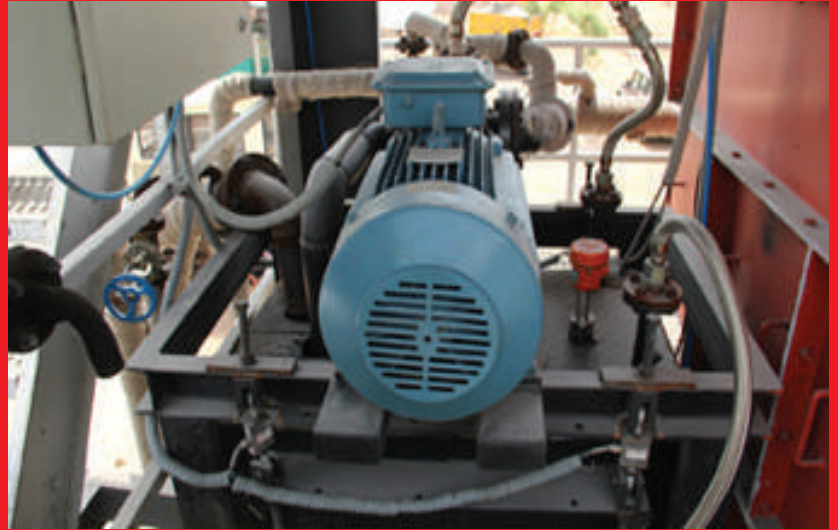
Direct drive twin shafts are driven by two individual motors with eight V-belts that transfers sufficient power to smoothly drive shafts.

Optimised design offers 20% more productivity.

Arm protector, and coated tip enable five times longer life.

Dust, and bitumen contamination to the mixer cylinder is avoided by a side cylinder design.

Low noise creation by V-belt driving.



## 100% HIGH DENSITY TUNGSTEN TIP PROTECTOR

Guarantee long life & Durability



## DRYER

By the innovative flight design, the aggregates curtain is formed immediately after the feeding section, and keeps smoothly moving forward upto the burner chamber, then, flows towards the discharge chute no longer forming aggregates curtain, Dryer support rollers are fixed on the frame with a certain pin, so, the dryer position shall not be changed, and factory pre-alignment is widely applied for easy adjustment

## BURNER

Industrial type with high pressure (1.5 proportional)

All kinds of fluids (fuel-oil, 6 no fuel-oil, diesel) natural gas and LPg can be used. Air/fuel ratio, flame length, suction, etc. are controlled by automation from control cabin.

Complete combustion provides low NO<sub>2</sub>, Co emission, high emission and low fuel consumption

Igniting is done by LPG, if fuel oil is used as a fuel, igniting is started with diesel and also finished with diesel oil

Safe operation

Rail system provides easy maintenance and repair.

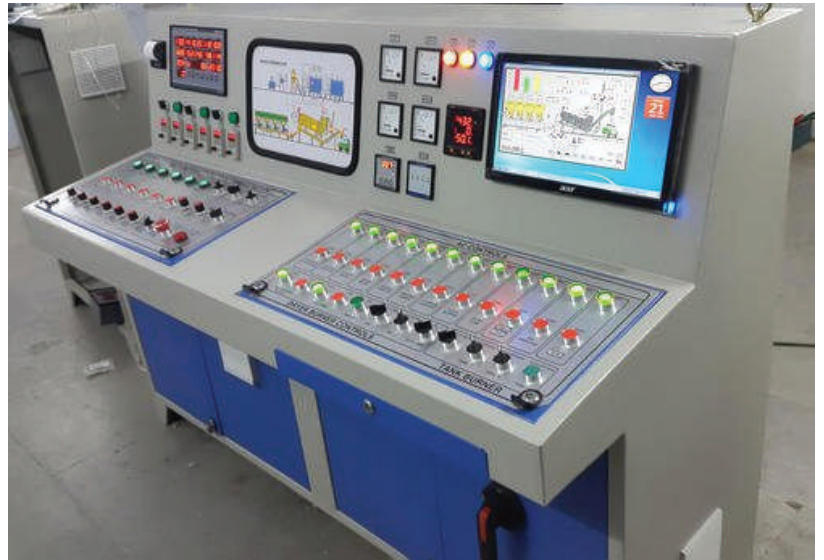




## CONTROL PANEL

Fully computerised control cabin (AC optional) with onboard electrical power control console, distribution switch board, fully automatic process & sequence controls are a standard on all DM series plants.

A user friendly software gives you total reliability and ensures top notch performance.



- Fail proof power interlocks and auto process controls
- Online fault detection
- Online printing facility
- Provisions to print, store and edit production details, mix proportion, etc.
- Display of all process control parameters Auto / Manual operation

The control is equipped with function keys and numeric keys and does not require special skills for operation. Display of all process control parameters

## DUST COLLECTING SYSTEM (PRIMARY DE-DUSTER, & BAG FILTER HOUSE)

SPECO Bag filter house is designed to provide the largest volume for give airflow with filter bag cleaning system by the pulse jet air. Coupled with a bag filter house, a primary de-Duster is also provided above the dryer. The air header is mounted on the top of bag filter house for easy access, and maintenance work.



- Maximised airflow & filtration.
- Temperature detector for bag protection
- Efficient bag cleaning by air pulse jet
- Easy access, and maintenance by top mounted air headers

**POWEROL**<sup>®</sup>  
Power Energy Systems

Unit 1 - No. 107 Industrial Park Road, Valarpuram  
Village, Sriperumbudur Taluk, Kanchipuram  
District, Tamil Nadu 602105

Unit 2 - 38/2 & 38/3, IIDC Nagari, Keelapattu Village,  
Nagari, Andhra Pradesh 517590