

# POWEROL®

## STATIONARY CONCRETE PLANT



India's Leading **Make in India** manufacturer of superb quality Stationary concrete plants established in Chennai.

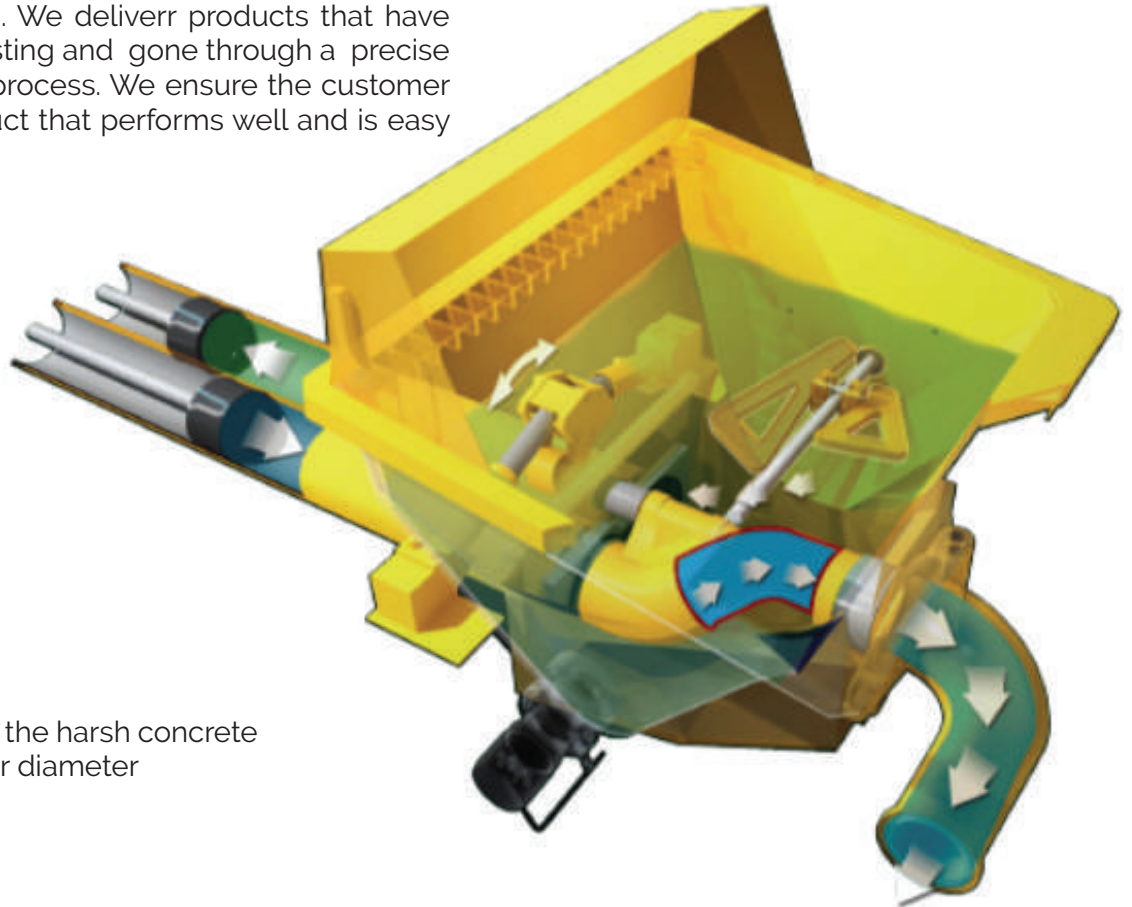
INDIA'S CONSTRUCTION MACHINERY MANUFACTURER

[www.powerol.com](http://www.powerol.com)

# Innovation for best quality

The powerful stationary concrete pumping unit ensures gentle, continuous and regular flow and guarantees an extremely efficient system for pumping different types of concrete, with aggregates of all sizes, reducing the number of cycles per minute while maintaining the same flow rate, thus ensuring less wear and longer life. The available pumping units are chosen according to the desired way of pumping, equipped with the S-valve.

Complete control for every size pump achieved with a small lightweight radio remote control. Only the highest-grade and well-known brand components are used in concrete pumps. We deliver products that have passed severe quality testing and gone through a precise and accurate assembly process. We ensure the customer receives a durable product that performs well and is easy to control and maintain.



## SUPER S - VALVE

S - Valve is so suitable to the harsh concrete because it has a big inner diameter



## HOPPER

The inside of the hopper is applied in such a triangular paddle so the concrete infection is easy when working. Also the FLAP ELBOW of one touch way is applied in order to clean with the small amount of cleaning water in a short time during cleaning



## WEAR PLATE AND WEAR RING

A TUNGSTEN CARBIDE wear plate and wear ring come standard with all pumps, providing a longer lifespan (up to 300% longer than non-carbide wear parts) which keeps maintenance costs down.

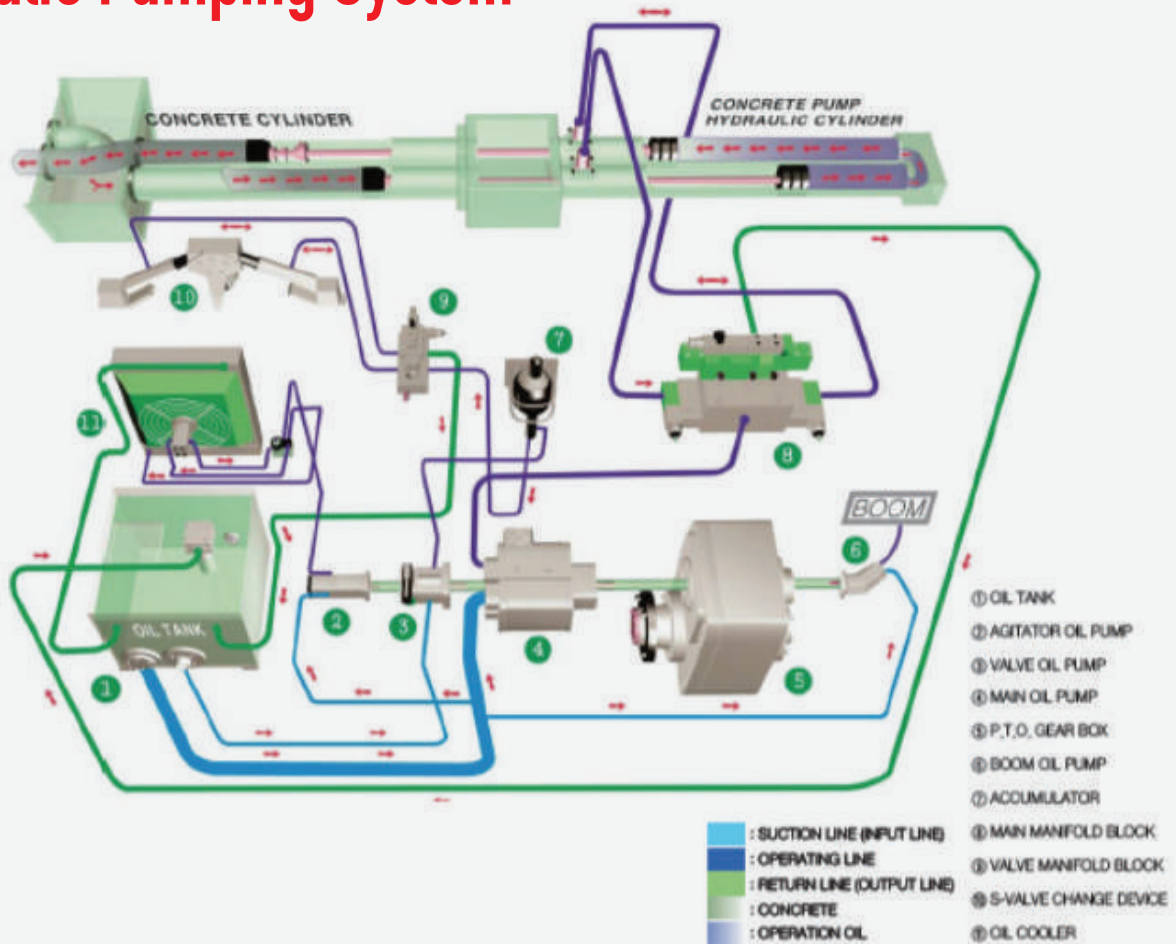


## RAM

Through our own brand applied high pressure system, longer life of rubber piston is achieved.



# Hydraulic Pumping System



## HYDRAULIC SYSTEM INFORMATION

The open loop system makes easy maintenance.

Changing system is full hydraulic, free from electrical problem.

And the large return filter guarantees longevity of your equipment as it reduces the amount of contamination in the oil increasing the performance

## IMPORTANT EMERGENCY PUMP OPERATION

In the event of an electrical malfunction, the entire system can continue to pump in a manual mode. operators can switch the entire system from an electric mode to manual in case of emergency.



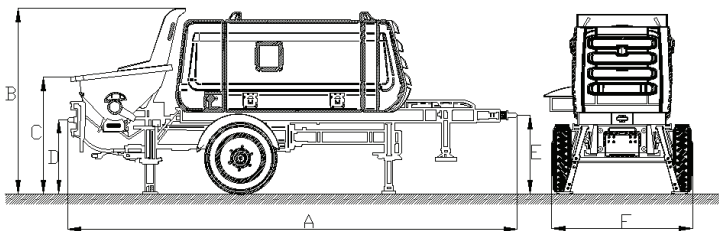
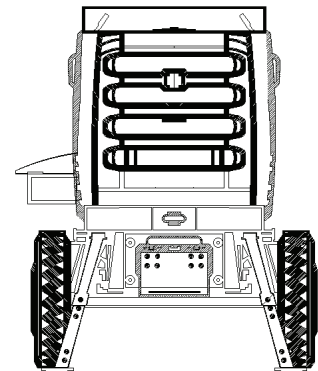
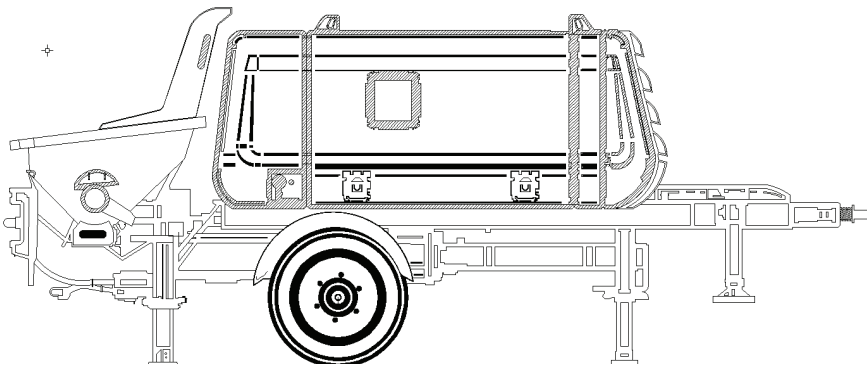
# Features

- Four(4) outriggers; manual jack, One(1) front auxiliary outriggers; hyd.jack
- Oil cooler equipped
- Hydraulic oil filtering by suction filter
- Emergency stop switches on pump body and remote controller
- Battery isolator
- Fuel-water separator
- Central manual greasing for hopper
- Water pump equipped

# Options

- Auto grease pump for hopper
- Water tank
- Wireless remote control

Model Specifications	Unit	701	1400	1405	1407	1407 PD	2107
Prime Mover	kW	35	49	49	75	132	231
Theoretical Output	m <sup>3</sup> /hr	31	49/31*	51/33*	65/45*	67/43*	95/66*
Del. Cylinder Diameter	mm	200	200	200	200	200	200
Del. Cylinder Stroke	mm	700	1000	1400	1400	1400	2100
No. of Strokes	per min	23	26/17*	24/17*	25/18*	24/17*	24/16*
Concrete Pressure	bar	67	60/90*	70/102*	65/96*	70/106*	115/170*
Concrete Hopper Capacity	l	600	600	600	600	600	600



Model	A	B	C	D	E	F
Size	5180	2130	1330	845	1730	890

## POWEROL

Unit 1 - No. 107 Industrial Park Road, Valarpuram Village, Sriperumbudur Taluk, Kanchipuram District, Tamil Nadu 602105

Unit 2 - 38/2 & 38/3, IIDC Nagari, Keelapattu Village, Nagari, Andhra Pradesh 517590