

**POWEROL®**

# MOBILE CONCRETE BATCHING PLANT

India's Leading Make in India  
manufacturer of superb quality  
concrete batching plants established

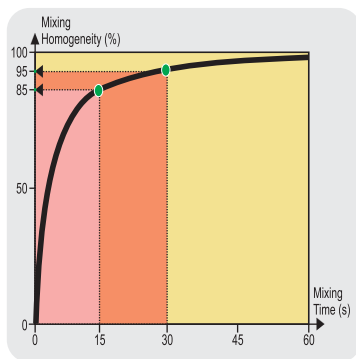
INDIA'S CONSTRUCTION MACHINERY MANUFACTURER

[www.powerol.com](http://www.powerol.com)



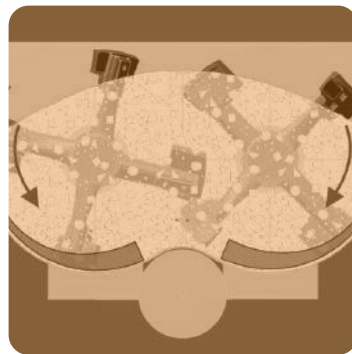


## KEY FEATURES



### ULTRA QUICK MIXING

- Just 15 secs for 85% mix quality with high compressive strength and constant slump
- Another 15 secs for 95 % homogeneity



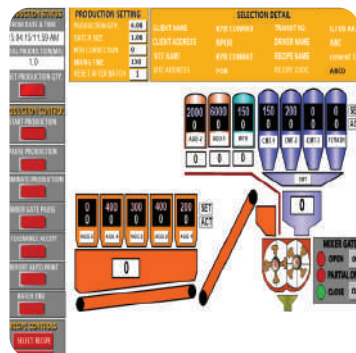
### EXTENDED LIFETIME OF WEAR PLATES

- Innovative design enhances lifetime of wear plates
- Made of special steel or special chilled cast iron enhances strength.



### HIGHEST MIX QUALITY

- Intelligent placement of mixing arms ensures high degree of turbulence
- Inherent design ensures all particles achieve 3 dimensional motion



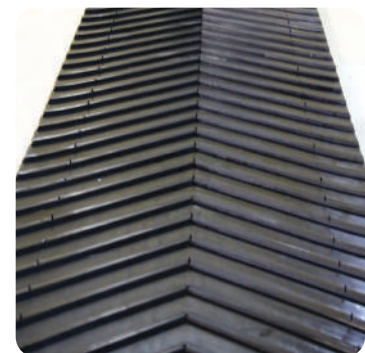
### HIGH TECH CONTROL SYSTEM

- Fully automated PLC control system with SCADA for inventory and MIS
- Quick error and fault checking system with various performance parameters



### CONTROL PANELS

- Compact and easy to manage
- Dust free and waterproof



### CHEVRON CONVEYOR BELTS

- Long life for belts
- Compact and sleek

# Highlights

**Easy & Cost effective to transport**

**01**

Can be transported on a one truck trailer since main components are equipped on a mono block chassis

**Quick Installation & kick off in 1-2 days**

**02**

Pre-installed modules and cables from Powerol factory ensures quick and easy onsite installation.

**Minimum area required for Installation**

**03**

Innovative design ensures flexible choice of installation configurations which fits site

**Simple Foundation required**

**04**

All components installed in ground level ( zero level) ensuring stability

**High quality and precise concrete production**

**05**

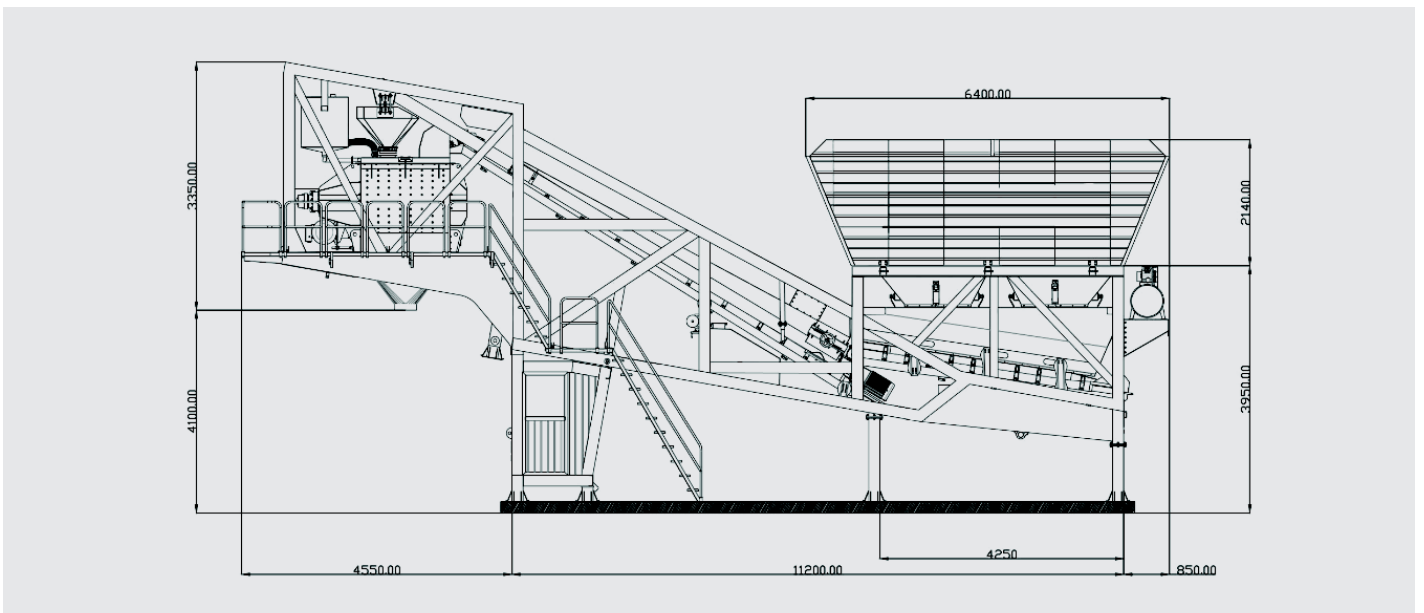
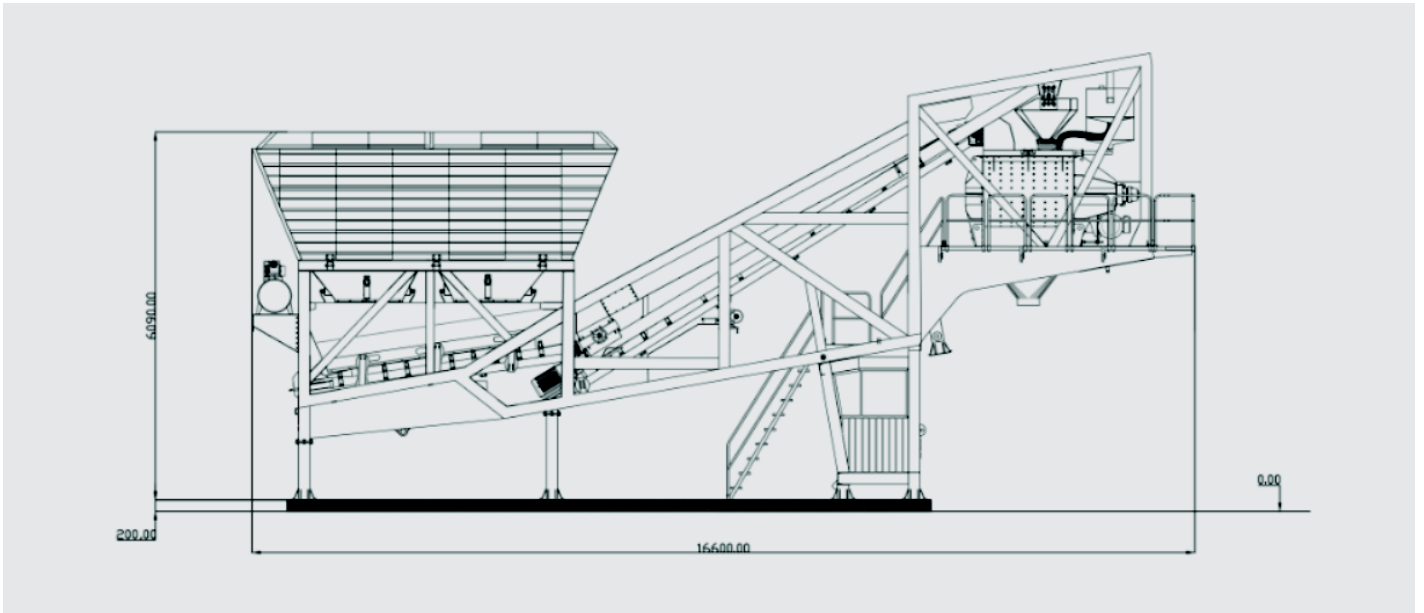
Completely automated computerised control system, production is as per requirements

**Widest Product Range**

**06**

Different type of Mixers ranging from 30 to 150m<sup>3</sup>/h capacity

## DIMENSION CHART



Illustrations and texts are non-binding and may include customized fittings. Subject to technical changes. Performance data depend on operational conditions.

## TECHNICAL SPECIFICATION OF MOBILE BATCHING PLANT

Powerol's mobile concrete batching plants are innovatively designed to be installed on a mono block chassis which ensures ease of transportation, can be quickly installed on a simple concrete foundation and are ready for concrete production in quick time.

Model Specifications	Unit	MP 30	MP 60
Type of Mixer	-	Pan/ Planetary/ Twin Shaft	Pan/ Planetary/ Twin Shaft
Capacity of Mixer	l	750	1500
Compacted Output per Batch	l	500 *	1000 *
No. of Aggregates	no.	4	4
Storage Capacity of Aggregate	m <sup>3</sup>	28	40
No. of Cement / Fly Ash	no.	4	4
No. of Water	no.	2	2
No. of Additives	no.	2	3
Aggregate Loading in Mixer	-	Belt	Belt
Connected Load#	kW	40	60
D.G. Set Required	kVA	62.5	125
Filling width of each bin	M	3.16	3.16
Types of cement upto	NOS	2/6	2/6
Water connection	DN	80	80
Operating pressure of water	Bar	3-4	3-4
Operating voltage	V	415	415
Admissible voltage fluctuation	%	+/- 10	+/- 10
Mains frequency	Hz	50	50

## ACCESSORIES

### MOBILE STEEL SKID FOUNDATION FOR CEMENT SILOS

Mobile steel skid foundation helps to enhance speed of installation and reduce operational costs since they facilitate installation of cement silos on flat ground without a need for concrete slab or column foundation. This can also be transported along with the plant saving costs.

### MOBILE AGGREGATE FEEDING SYSTEM

Mobile aggregate feeding system helps in easy aggregate feeding with no additional cost for foundation or ramp. Specifically designed to reduce the cost for building a one side or two wide feeding ramp and ease of aggregate feeding.

## POWEROL

Unit 1 - No. 107 Industrial Park Road, Valarpuram  
Village, Sriperumbudur Taluk, Kanchipuram  
District, Tamil Nadu 602105

Unit 2 - 38/2 & 38/3, IIDC Nagari, Keelapattu Village,  
Nagari, Andhra Pradesh 517590

Illustrations and texts are non-binding and may include customized fittings. Subject to technical changes.  
Performance data depend on operational conditions.