

STATIONARY CONCRETE BATCHING PLANT

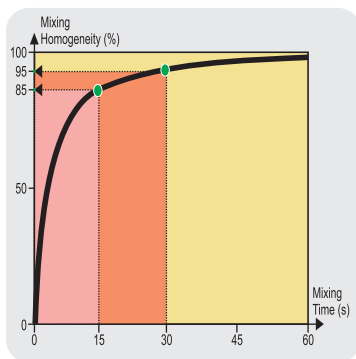


India's Leading **Make in India** manufacturer of superb quality concrete batching plants established in Chennai.

INDIA'S CONSTRUCTION MACHINERY MANUFACTURER

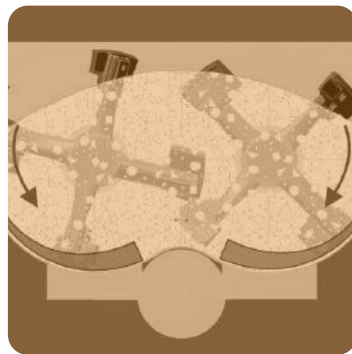


KEY FEATURES



ULTRA QUICK MIXING

- Just 15 secs for 85% mix quality with high compressive strength and constant slump
- Another 15 secs for 95 % homogeneity



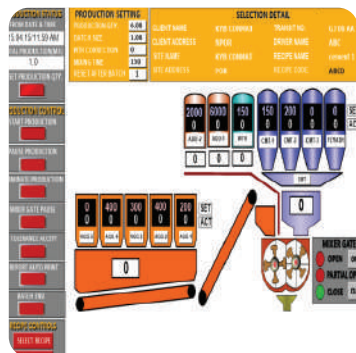
EXTENDED LIFETIME OF WEAR PLATES

- Innovative design enhances lifetime of wear plates
- Made of special steel or special chilled cast iron enhances strength.



HIGHEST MIX QUALITY

- Intelligent placement of mixing arms ensures high degree of turbulence
- Inherent design ensures all particles achieve 3 dimensional motion



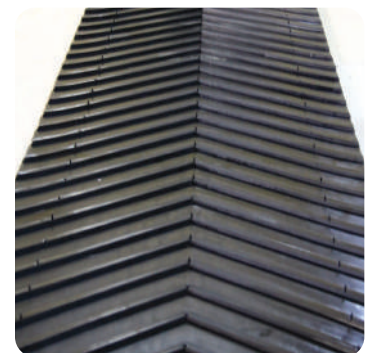
HIGH TECH CONTROL SYSTEM

- Fully automated PLC control system with SCADA for inventory and MIS
- Quick error and fault checking system with various performance parameters



CONTROL PANELS

- Compact and easy to manage
- Dust free and waterproof



CHEVRON CONVEYOR BELTS

- Long life for belts
- Compact and sleek

Highlights

Powerol's Stationary concrete batching plant is designed very innovatively using the state-of-the-art technology. The stationary concrete batching plant is built with real time control which ensures exact interaction of all components. The plant is designed to operate very economically and produce maximum output volumes. Powerol has built the plant with high quality components which ensures a smooth operation with literally no downtime and a long service life for the plant.

Powerol has designed the plant for high quality of concrete output by providing for high dosing accuracy when the materials are weighed together with moisture measurement during mixture process.

Apart from the main concret batching plant Powerol provides a host of options of accessories which will make the life easier for the client

01 Micro silica weighing equipment

02 Ice weighing equipment

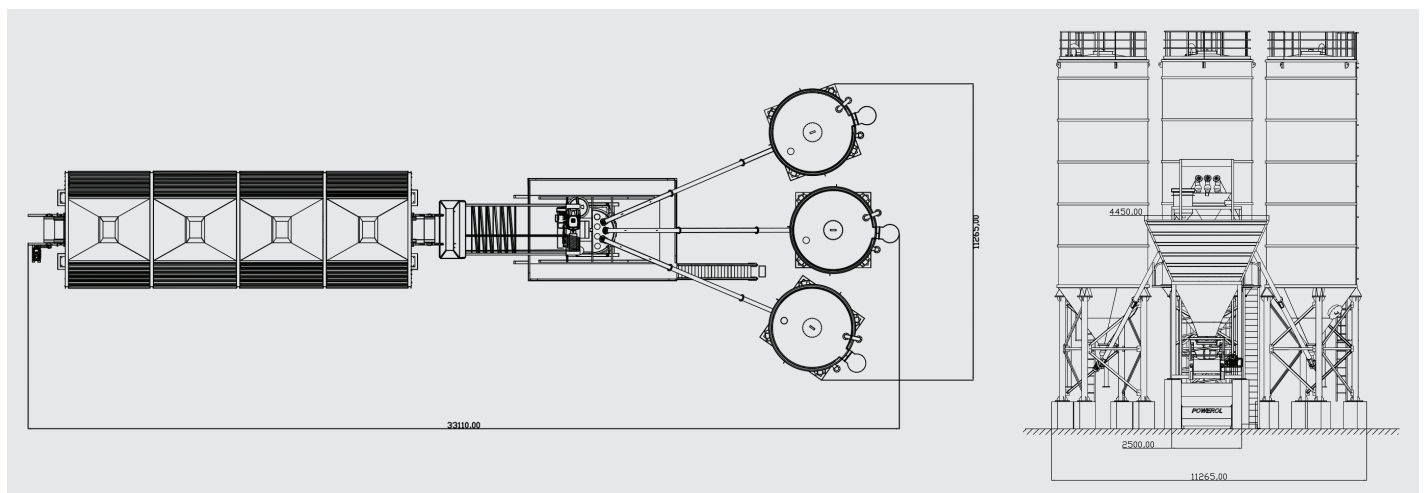
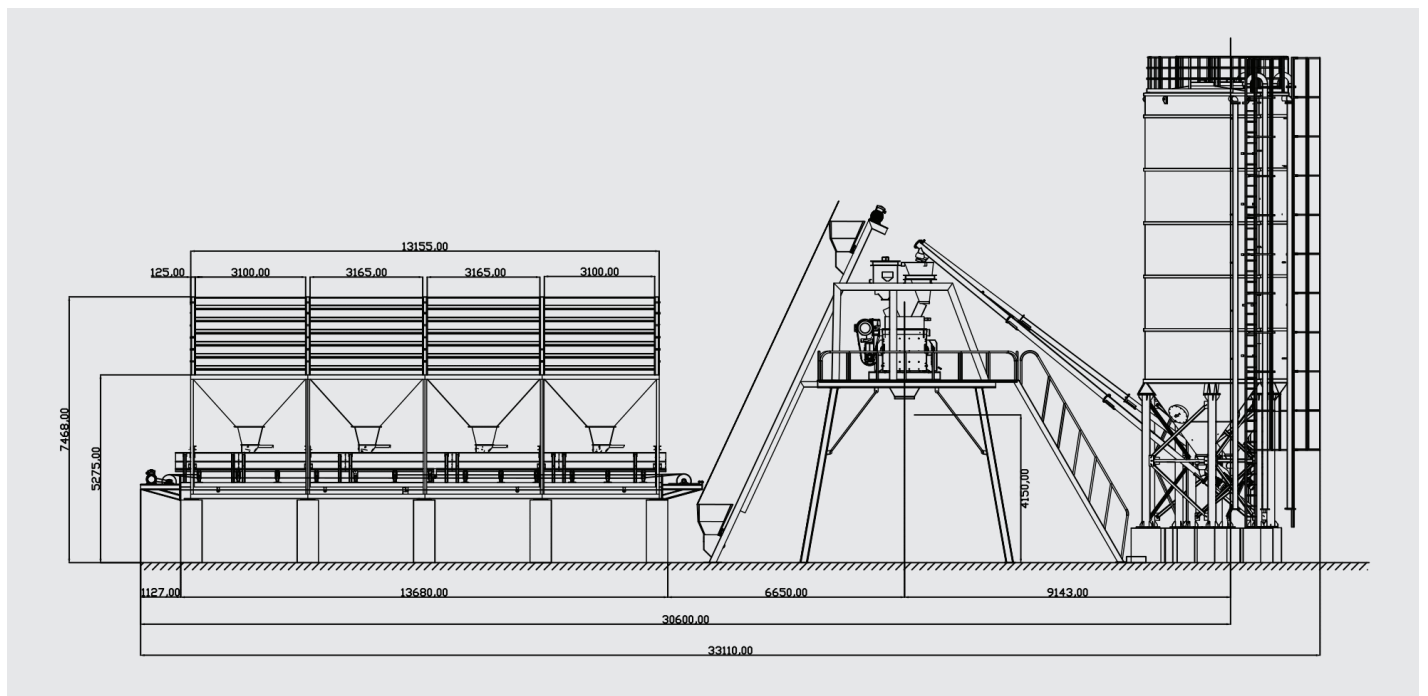
03 Additive weighing equipment

04 Dust filtering systems

05 High-pressure mixer cleaning

06 Chutes for truck loading or for reclaiming water

DIMENSION CHART



Illustrations and texts are non-binding and may include customized fittings. Subject to technical changes. Performance data depend on operational conditions.

TECHNICAL SPECIFICATION OF STATIONARY BATCHING PLANT

Powerol has a range of stationary batching plants with different capacities, specifications as per the industry's needs.

Model Specifications	Unit	H P 30	HP 60	HP 90	HP 120
Type of Mixer	-	Pan/Planetary/ Twin Shaft	Pan/Planetary/ Twin Shaft	Twin Shaft	Twin Shaft
Capacity of Mixer	1	750	1500	3000	4500
Compacted Output per Batch	1	500*	1000*	2000	3000
No. of Aggregates	no.	4	4/5/6	4/5/6	4/5/6
Storage Capacity of Aggregate	m3	30	40 to 240	40 to 240	70 to 240
No. of Cement / Fly Ash	no.	4	4	4	4
No. of Water	no.	2	2	2	2
No. of Additives	no.	2	3	3	3
Aggregate Loading in Mixer	-	Skip Hoist/Belt	Skip Hoist/Belt	Skip Hoist/Belt	Skip Hoist/Belt
Connected Load#	kW	52	88	131	179
D.G. Set Required	kVA	62.5	125	251	321
Filling width of each bin	M	3.16	3.16	3.16	3.16
Types of cement upto	NOS	2/6	2/6	2/6	2/6
Water connection	DN	80	80	80	80
Operating pressure of water	Bar	3 -4	3 -4	3 -4	3 -4
Operating voltage	V	415	415	415	415
Admissible voltage fluctuation	%	+/-10	+/-10	+/-10	+/-10
Mains frequency	Hz	50	50	50	50

ACCESSORIES

MOBILE STEEL SKID FOUNDATION FOR CEMENT SILOS

Mobile steel skid foundation helps to enhance speed of installation and reduce operational costs since they facilitate installation of cement silos on flat ground without a need for concrete slab or column foundation. This can also be transported along with the plant saving costs.

MOBILE AGGREGATE FEEDING SYSTEM

Mobile aggregate feeding system helps in easy aggregate feeding with no additional cost for foundation or ramp. Specifically designed to reduce the cost for building a one side or two wide feeding ramp and ease of aggregate feeding.

POWEROL

Unit 1 - No. 107 Industrial Park Road, Valarpuram Village, Sriperumbudur Taluk, Kanchipuram District, Tamil Nadu 602105

Unit 2 - 38/2 & 38/3, IIDC Nagari, Keelapattu Village, Nagari, Andhra Pradesh 517590