

POWEROL®

BOOM PUMP



India's Leading Make in India
manufacturer of superb quality
Boom Pump established in Chennai.

INDIA'S CONSTRUCTION MACHINERY MANUFACTURER

www.powerol.com

Features

CONTROL PANEL

The electrical system is a functional designed using common relays. This enables a smaller rear switch panel to improve workplace efficiency.



OUTRIGGER

X-Style designed outriggers improve stability while reducing the footprint enabling the pump to operate in confined spaces



WATER PUMP

Multistage centrifugal water pump is capable of efficiently cleaning all residual concrete from the pump. Operating at 202liters and 120liters per minute.



AUTOMATIC GREASE SUPPLY DEVICE



RADIO REMOTE CONTROL

Proportional radio remote control allows smooth and safe operation of the boom. Our standard specification includes the option of adjusting the proportional function from the transmitter



MAIN OIL PUMP

This is the main pump which delivers oil for the pumping cylinder, accumulator pump, boom pump and agitator pump are all world well-known products.

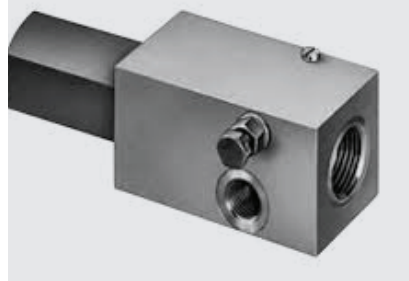


SWITCH BOX



LOAD HOLDING VALVE

P Satandard on boom cylinders to hold the boom in position



BOOM CONTROL VALVES

This valve is fully proportional. boom control valve operates the boom functions and supplies oil for the outrigger circuit



MAIN MANIFOLD BLOCK

All electrical connections have manual overrides. The main pumping system is an open loop circuit. This reduces heat in the hydraulic system.



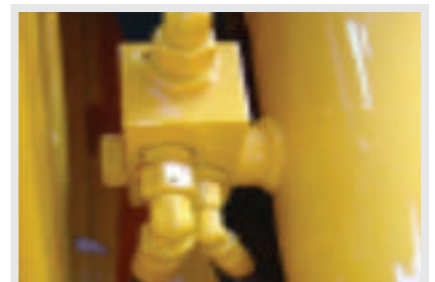
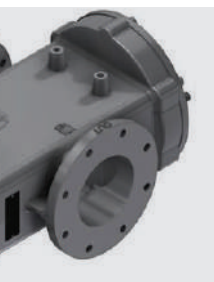
OIL COOLER AND HYDRAULIC FILTER

The fan is operated by a hydraulic motor for excellent cooling capacity. The fan is controlled by a temperature sensor.



HYDRAULIC SENSING VALVE

This is the major valve for the hydraulic changing system. Hydraulic sensing valve guarantees good durability, long life time and is free from electrical problem.

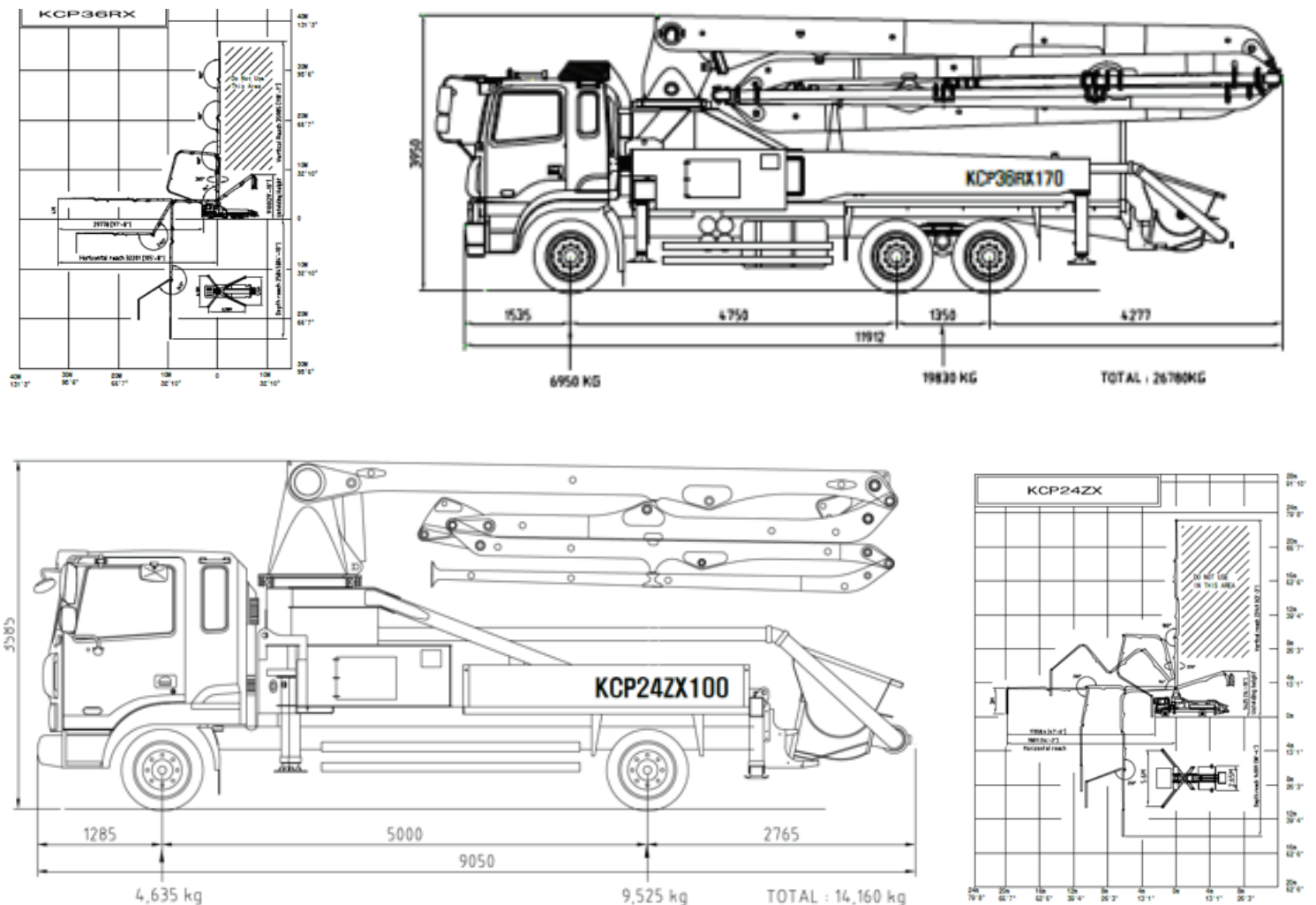


TECHNICAL SPECIFICATION

Boom Specifications	Unit	
Vertical reach	36 M	23.2 M
Horizontal reach	32.2 M	19.8 M
Reach from front of truck	29.8 M	17.3 M
Unfolding height	9.1 M	5.4 M
Section articulation	94°/180°/240°/245°	94°/180°/260°/250°
Rotation	370°	370°
Delivery line	125 mm	125 mm
Proportional boom	Yes	Yes
End hose length	4M	3M
Outrigger spread-front	6.18 M	5.6 M
Outrigger spread-rear	7.15 M	2.65 M
Max.outrigger weight	22,500Kg	11,000Kg

Pump Specifications	Unit	
Maximum outout	170 m/h	90 m/h
Concrete cylinder	ø230x2100	ø230x1400
Stroke per minute	32	28
Concrete pressure	72 bar	69 bar
Hopper capacity	0.6 m	0.6 m
S-tube	ø200xø180	ø200xø180
Hydraulic pump	KCP - K3V140DT	KCP - K3V180S
Cycling system	Hydraulic with manual overrides	Hydraulic with manual overrides
Max. aggregate size	40 mm	40 mm

DIMENSION CHART



POWEROL

Powerol Energy Systems

No 107, Industrial Park Road, Valarpuram village,
Sriperumbudur taluk, Kanchipuram District 602105

+91 97908 75958 info@powerol.com

Illustrations and texts are non-binding and may include customized fittings. Subject to technical changes.
Performance data depend on operational conditions.